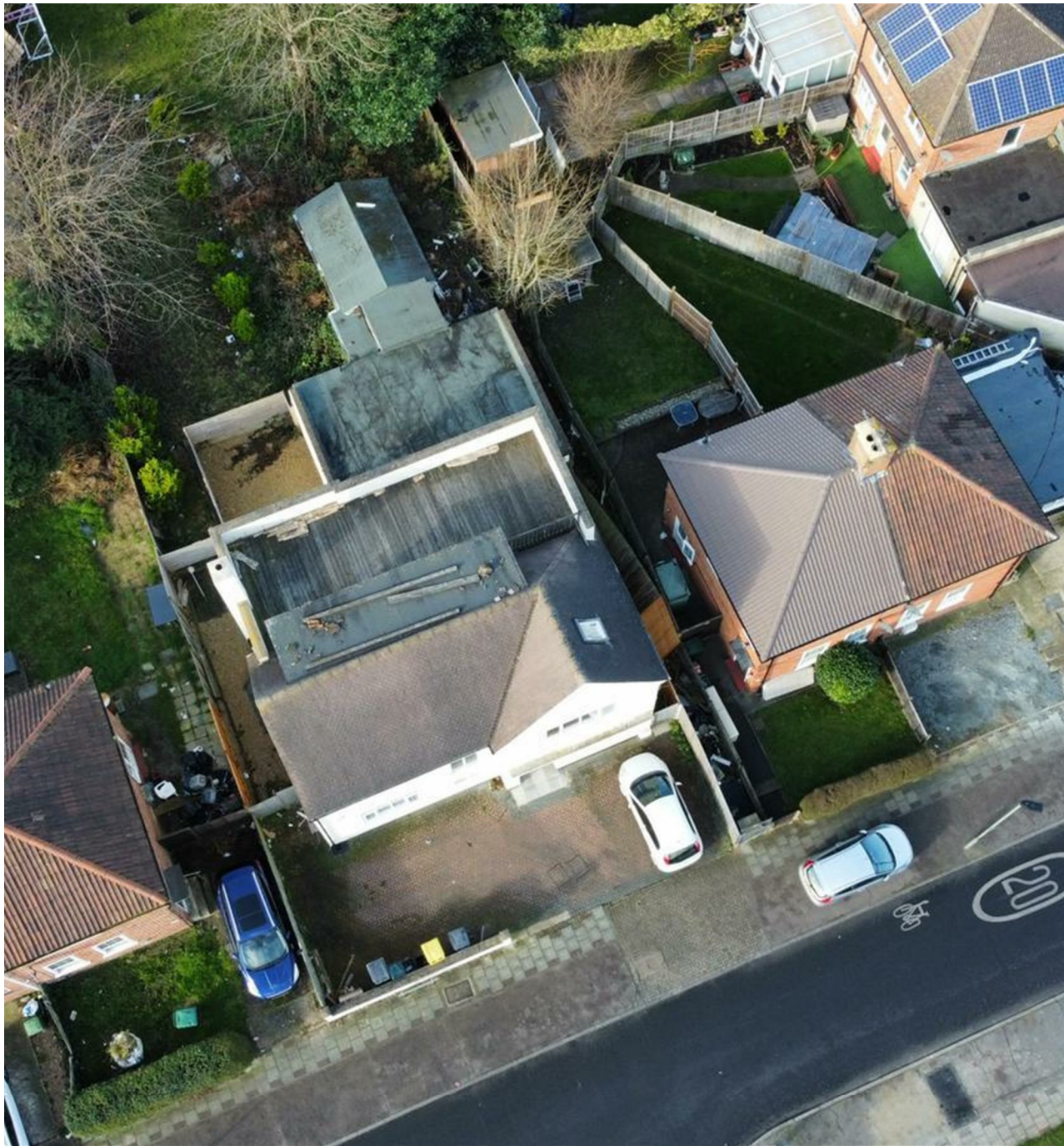




Court Farm Road, London, SE9

BUTLER  STAG



DEVELOPMENT/ INVESTMENT OPPORTUNITY

An extremely spacious refurbished 7/8 bedroom licensed HMO with adjoining 42' disused D1 doctors surgery (with a further 4 rooms) and large garden/land all prime for development with planning permission for 6 flats.



Freehold

Price On Application

The property is currently achieving £3700 pcm in rental and has the added benefit of planning permission to convert and extend.

Connections are excellent with Grove Park Station being just 5 minutes away which provides regular services to central London taking about 30 minutes to Liverpool Street.

DESCRIPTION:

The site is located on Court Farm Road and is within close proximity to local shops.

PLANNING:

Planning Permission has been granted with all matters reserved for six units.

Further details are available upon request or can be downloaded via Bromley Planning Portal with the reference 19/03757/FULL1

TENURE:

The site is to be sold freehold

TITLE:

The site is offered for sale freehold

SCHEDULE OF ACCOMMODATION:

Flat 1 - 1 Bed / 2 Person - 52.355 sqm / 564 sq ft - Ground Floor (private garden)

Flat 2 - 1 Bed / 2 person - 78.376 sqm / 844 sq ft - Ground Floor (study/second bedroom and private garden)

Flat 3 - 1 Bed / 1 Person - 39.884 sqm / 430 sq ft - Ground Floor (private garden)

Flat 4 - 1 Bed / 1 Person - 39.159 sqm / 422 sq ft - First Floor (balcony and shared garden)

Flat 5 - 2 Bed / 3 Person - 62.364 sqm / 672 sq ft - First Floor (balcony and shared garden)

Flat 6 - 1 Bed / 2 Person - 50.967 sqm / 549 sq ft - Second Floor (balcony and shared garden)





Prepared on behalf of Butler & Stag Land and New Homes

If you have any further questions please don't hesitate to contact us on the details below

BUTLER & STAG

☎ 020 4542 2999

🏠 12 Coppice Row Theydon Bois, Essex, CM16 7ES

✉ enquires@butlerandstag.com

www.butlerandstag.uk

IMPORTANT NOTICE - These particulars have been prepared in good faith and they are not intended to constitute part of an offer or contract. We have not performed a structural survey on this property and the services, appliances and specific fittings have not been tested. All photographs, measurements, floor plans and distances referred to are given as a guide and should not be relied upon.